

**Jared Wilson**

Landscape Architect

City Design

Kaurna Country



# BIG MOVES

## PLACES & SPACES



### BMX and Youth Activity Hub

#### Precinct/Park

South-east Kurangga (Park 20)

#### Description

Create a contemporary Park Lands plaza in the north-west corner of the park. The plaza will serve as both a gateway and transition between the City and the Park Lands and provide a setting for temporary gallery pavilions and art installations serviced by a small café with associated outdoor dining. Expand the existing BMX track to include a skills track and mountain bike trails, creating a significant destination with associated attractions including nature and adventure play complemented by a small café or kiosk.

“Build on the cycling theme create a skills park for beginner and intermediate mountain bike riders.”

Shape the Park Lands 2015

IMAGE: Governors Island Park and Public Space, New York  
ARCHITECT: West 8



### Vibrant Veale

#### Precinct/Park

South Walyu Yarta (Park 21)

#### Description

Refresh the formal gardens. Consider upgrading existing infrastructure, developing new infrastructure and/or providing plug and play facilities to support a variety of uses including small to medium events. Expand path network to draw visitors further into the park and improve connections between the suburbs and the City.

“Veale Gardens is a wonderful location with an existing amphitheatre shape that lends itself to live music accompanied by nice food and drinks. With the growing number of residents in the area and increasing visitor numbers to the Park Lands we need a nice place to eat and entertainment venue in the park.”

Shape the Park Lands 2015

IMAGE: Howard Place, Bendigo,  
PHOTOGRAPHER: John Gollings



### Central Park in the South

#### Precinct/Park

South-east Pityarilla (Park 19)

#### Description

Expand on the existing playspace and create an exceptional community park in the southern Park Lands. A new hub will provide a variety of recreation and play opportunities serviced by high quality community facilities and amenities including a kiosk/café and fenced dog park.

“The Marshmallow Park is a great idea but I think it should be extended into a playground where people WANT to come and will make the effort to do so. Make it bigger and better so it's a place that all Adelaidians will want to come to.”

“Dog parks. These are not only fun for the dog, but also connect people together; promoting socialisation for all ages and makes everyone happy.”

Shape the Park Lands 2015

IMAGE: Drapers Field, London  
ARCHITECT: Kinear Landscape Architects  
PHOTOGRAPHER: Adrian Taylor



### Victoria Park – Final stages

#### Precinct/Park

Victoria Park Pakapakanthi

#### Description

Complete the vision of the existing master plan including southern wetlands, nature play opportunities and improved amenities to service sport and community use. Maximise opportunities for community recreation in and around the State Heritage precinct, including provision of an all-abilities playspace and community courts.

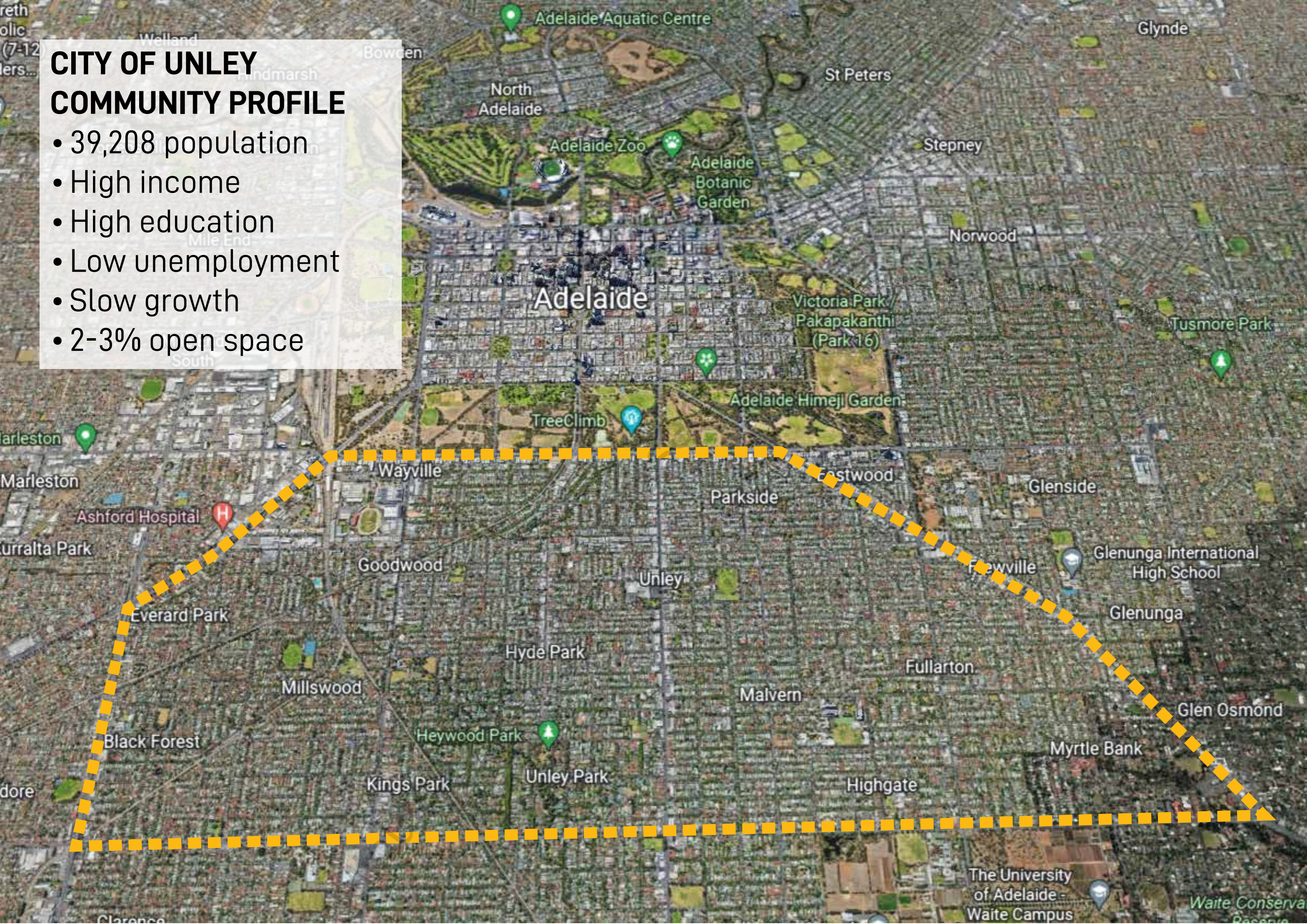
“I want to create a native forest in Victoria Park. I would like to see a significant portion of Park 16 returned to how it would have looked before settlement. A wetlands in the south would provide flood mitigation, but I'm thinking kangaroo grass as high as a man on a horse, gum trees etc..”

Shape the Park Lands 2015

IMAGE: Thalie Park, Chalon-sur-Saône, France  
ARCHITECT: Urbicus

# CITY OF UNLEY COMMUNITY PROFILE

- 39,208 population
- High income
- High education
- Low unemployment
- Slow growth
- 2-3% open space



## SPORT & RECREATION SAUCNA NETBALL

- St Johns Lutheran
- Rosefield Uniting

## ADELAIDE LUTHERAN

- Overflow & Training
- Kenilworth Cricket Club  
Touch Football



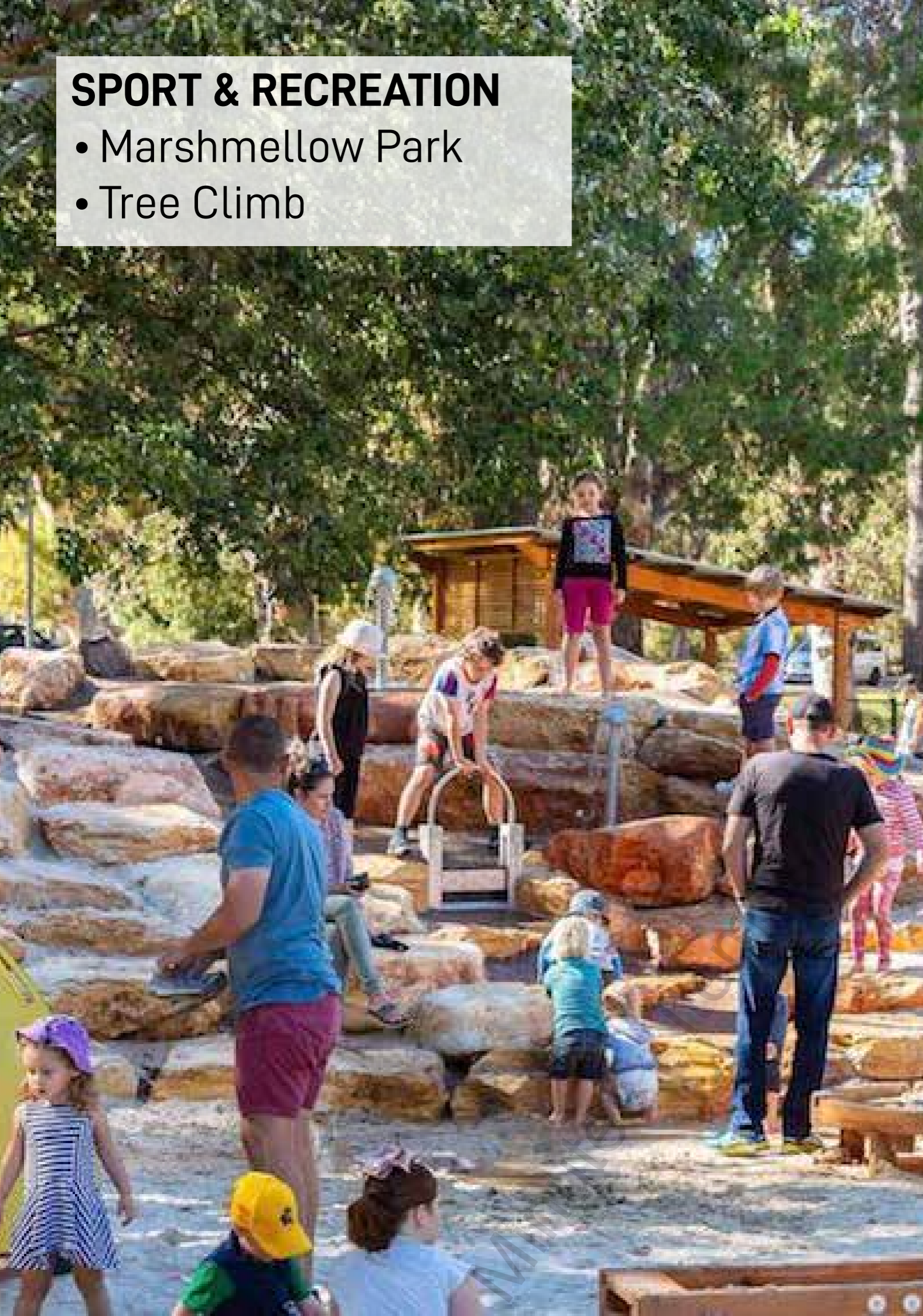
## SPORT & RECREATION

- Pityarilla
- City Dirt



## SPORT & RECREATION

- Marshmellow Park
- Tree Climb



# MOVEMENT

- 78.2% live Unley - work outside Unley
- 6,396 people to ACC
- 60% travel by car



# WALKING & CYCLING

- 1,600+ daily cyclists (2015/21)
- Through Parklands in day
- Edges at night
- E-scooter trials



253

ANZAC HWY/MARINO ROCKS GWAY

661

MIKE TURTUR BIKEWAY

266

UNILEY ROAD

448

RUGBY/PORTER BIKEWAY



# WALKING AND CYCLING INVESTMENT

- Kerb buildouts
- Traffic calming
- Give-way Changes
- Sharrows
- Planting
- Linemarking
- Signage



## CONNECTION/BARRIER

- 36,000-45,000 vpd N/S
- Greenhill Rd 50,000+
- 6 lanes and 10m median
- Long wait times for peds + cyclists at intersections

### Missing:

- Greenhill Road shared path
- Joslin Street shared path



## **PARKING**

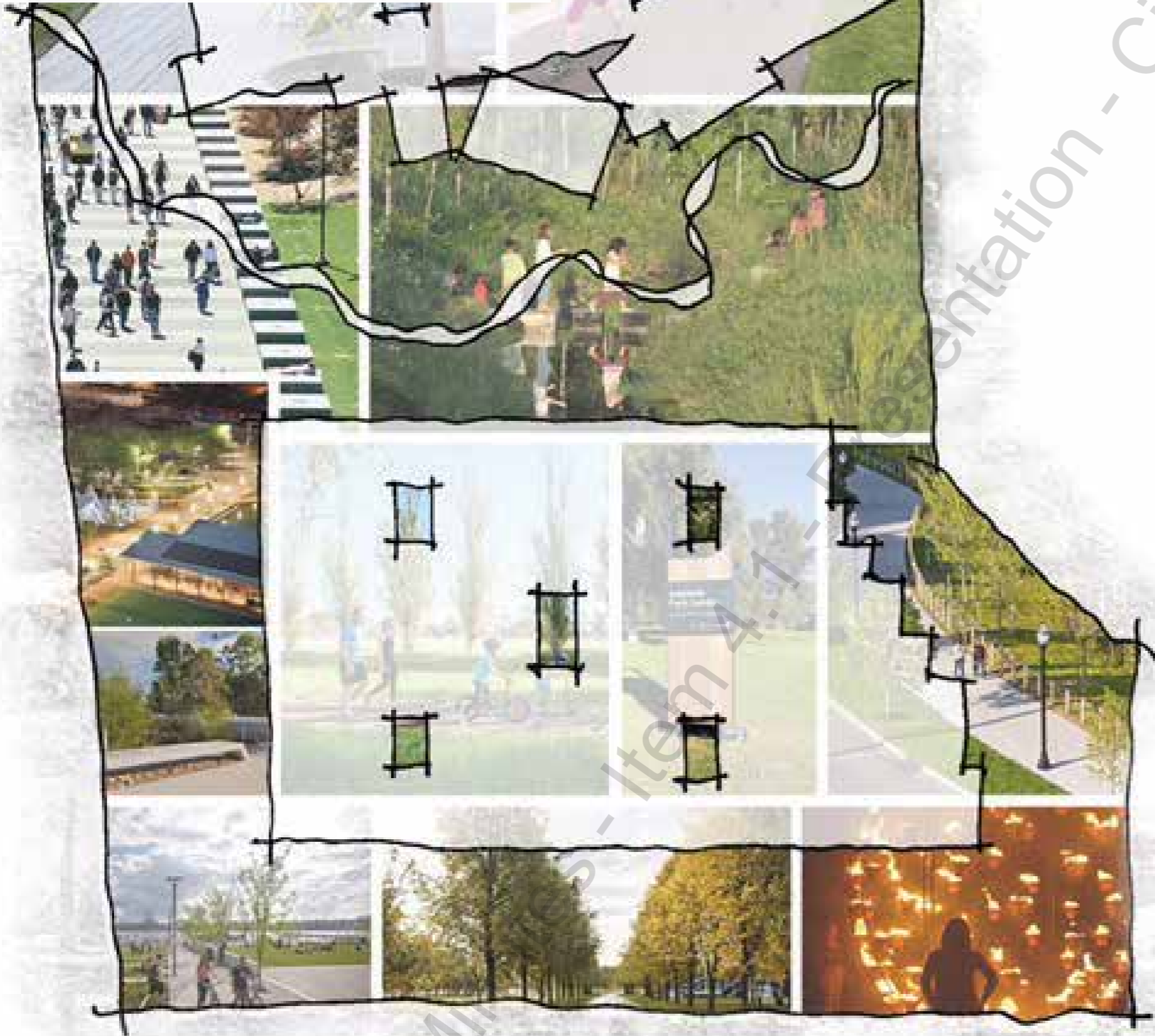
### **BUS ROUTES/STOPS**

- City commuters
- Inconsistent treatments
- Parklands vs business/resident users
- Low patronage/surplus stops
- Advertising income



# BIG MOVES

- linking the suburbs
- Park Lands frontage
- entice - invitation



## Great connections

### Description

Improve pedestrian and cycling networks linking the suburbs, Park Lands and City with regular and safe crossing points and path lighting.

.....

“Paths to connect the Park Lands to the suburbs.”

Shape the Park Lands 2015

IMAGE: Klyde Warren Park, Dallas, USA  
 ARCHITECT: OJB Landscape Architects  
 PHOTOGRAPHER: Mei-Chun Jau



## The Urban Address

### Description

Provide an increased level of amenity and attraction along Park Lands frontages to both the City and inner-rim suburbs. The approved appearance and functionality will encourage and entice further exploration deeper into the parks.

.....

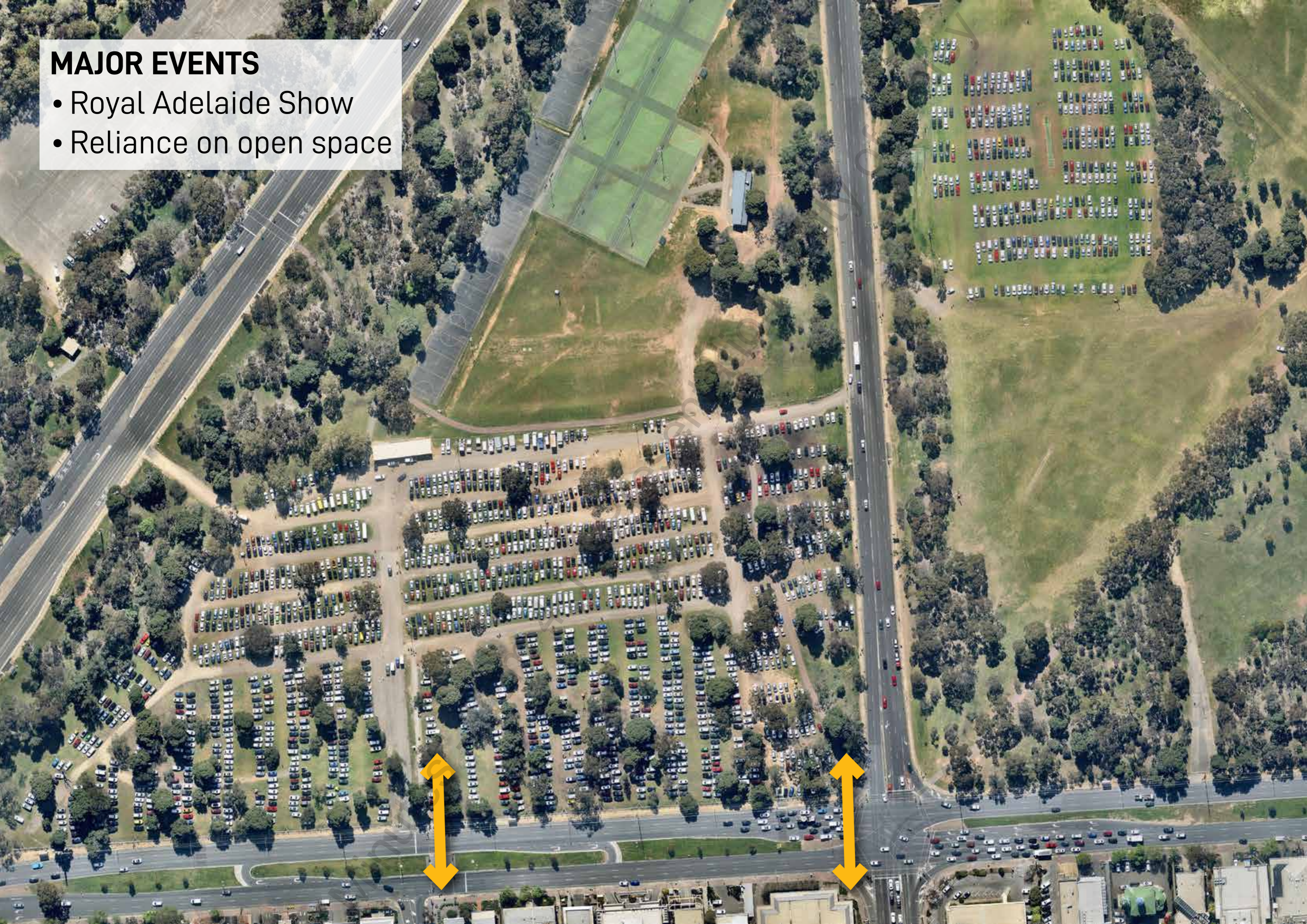
“As you look at the south park lands from Greenhill Road often you get a sense of foreboding. It doesn't look inviting at all. It would be great if its design could cleverly encourage people to enjoy their working lunch in park benches or to do their fitness there.”

Shape the Park Lands 2015

IMAGE: Mill River Park, Connecticut, USA  
 COPYRIGHT: OLIN / Sahar Coston-Hardy

# MAJOR EVENTS

- Royal Adelaide Show
- Reliance on open space



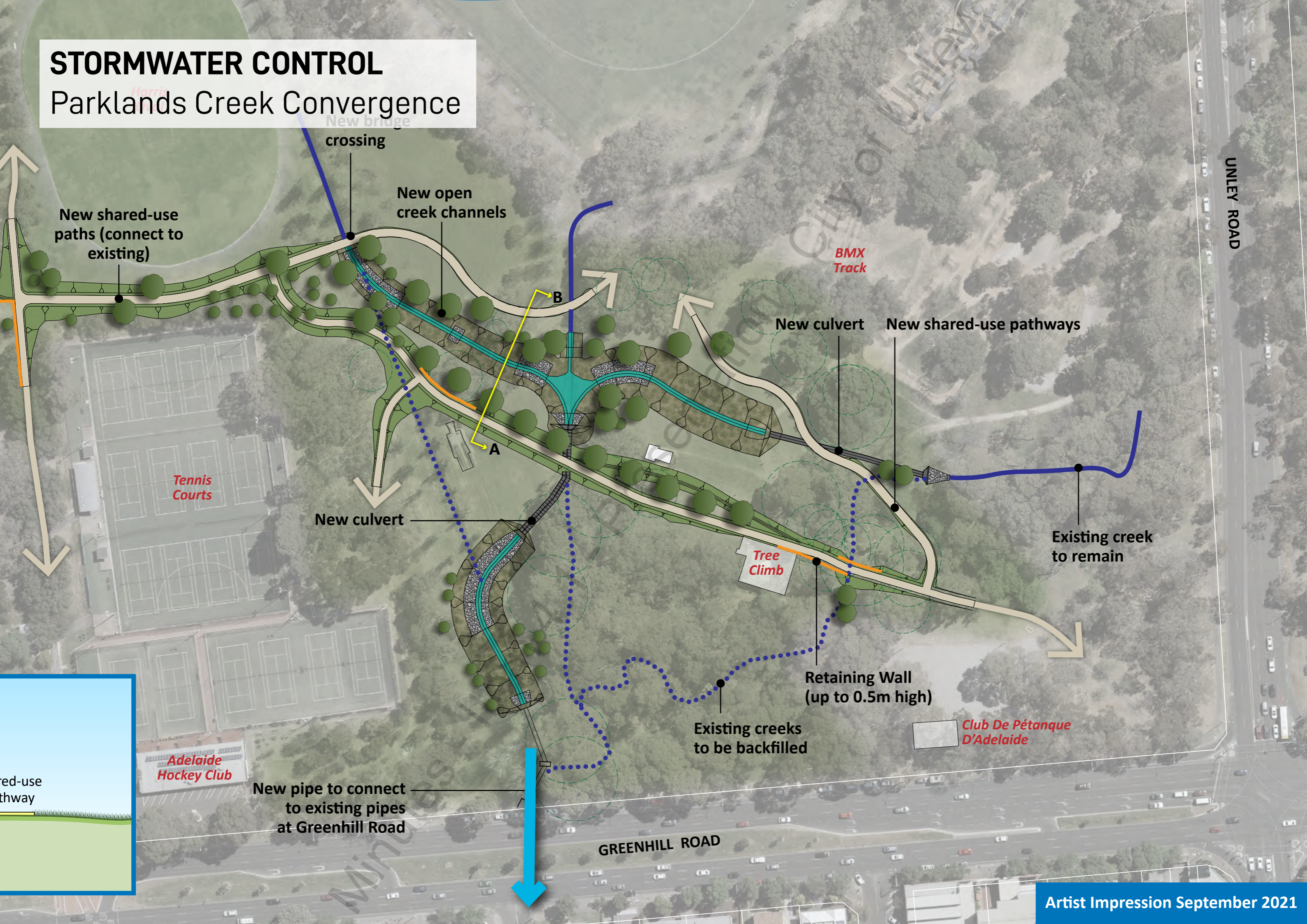
## MAJOR EVENTS

- Cultural Burn
- Connection to Country
- RAP development
- Shared knowledge



# STORMWATER CONTROL

## Parklands Creek Convergence



New bridge crossing

New open creek channels

New shared-use paths (connect to existing)

Tennis Courts

BMX Track

New culvert

New shared-use pathways

New culvert

Existing creek to remain

Tree Climb

Retaining Wall (up to 0.5m high)

Existing creeks to be backfilled

Club De Pétanque D'Adelaide

Adelaide Hockey Club

New pipe to connect to existing pipes at Greenhill Road

GREENHILL ROAD

UNLEY ROAD

ed-use  
thway

## HEAT ISLAND + TREE CANOPY

- Irrigated grass
- Trees biodiversity
- Canopy shade
- Temperature relief





## **ECONOMIC DEVELOPMENT**

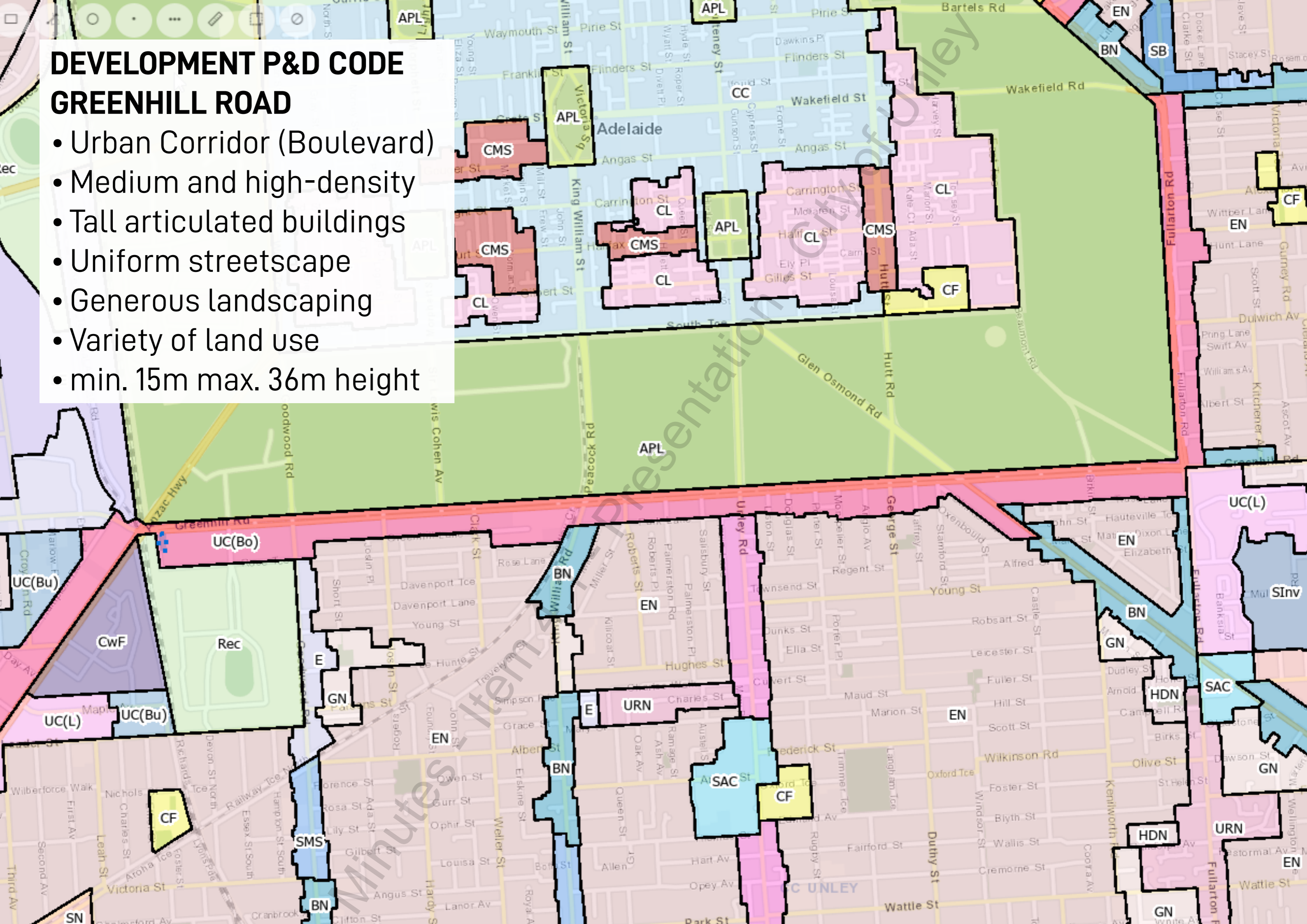
- Boulevard precinct
- Corporate hubs
- Work-life balance
- Private investment

# **BUSINESS WITH EDGE.**



## DEVELOPMENT P&D CODE GREENHILL ROAD

- Urban Corridor (Boulevard)
- Medium and high-density
- Tall articulated buildings
- Uniform streetscape
- Generous landscaping
- Variety of land use
- min. 15m max. 36m height



## DEVELOPMENT P&D CODE GREENHILL ROAD

- Current density outcomes from 6 recent developments is 200 dwellings/Ha
- Over next 25 yrs +1800 dwellings
- +3,000 population
- \$14M to P&D Fund



## **CITY OF UNLEY PRIORITIES**

- Continued access to open space for community.
- Sport and recreation venues.
- High quality walking and cycling connections.
- Increased tree canopy.
- Stormwater control and management.
- Appropriate Greenhill Road development.
- Verge improvements Greenhill Road.
- Ongoing opportunity to partner with ACC on projects.
- Relationship of information sharing, formal & informal, Sport & Rec, CLMP, RAP.